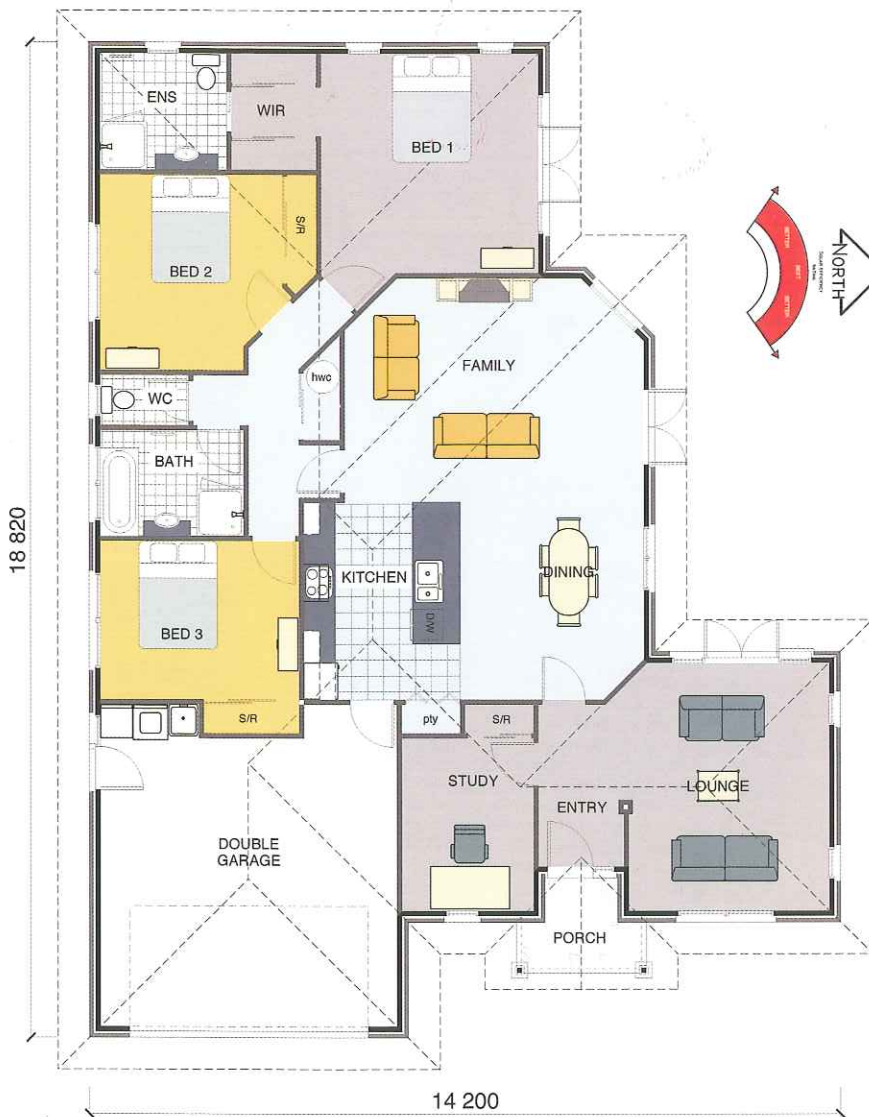




artist impression

RIVERA 202



Design features

Internal	162.7m ²
Garage	35.8m ²
Porch	3.5m ²
TOTAL	202m²

bedroom/s	3
bathroom/s	2
study	1
w/c	1
lounge	1
family	1
dining	1

THESE ARE CONCEPTS
DRAWINGS ONLY, FINAL
WORKING DRAWINGS
MAY DIFFER

copyright archiman
exclusive to
Stonewood Homes NZ

All plans can be mirror imaged



BE PART OF THE REVOLUTION I